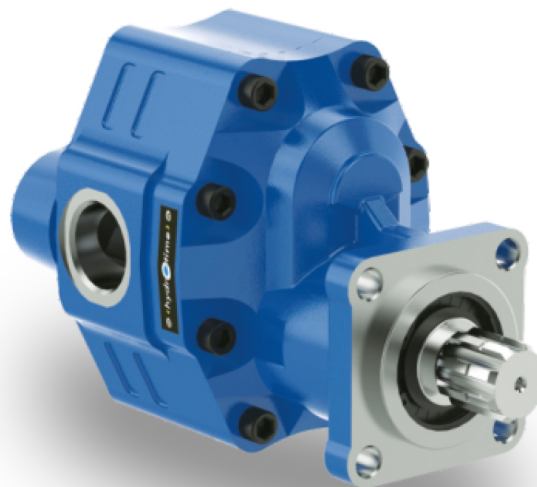
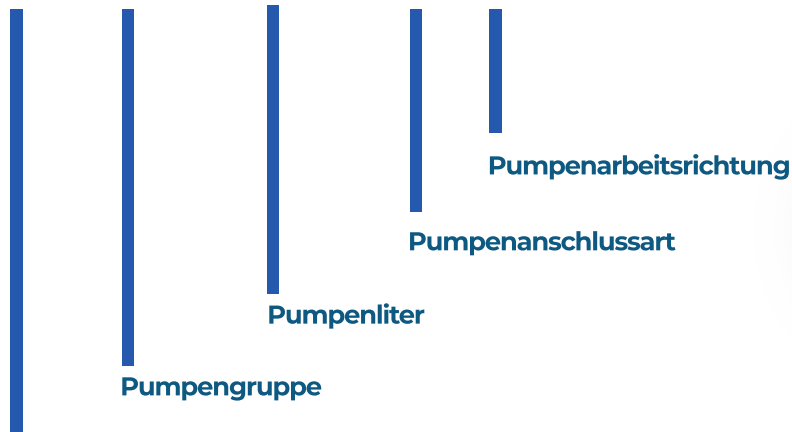




16 30 0170 3 66



Hydrotime Produktvariante

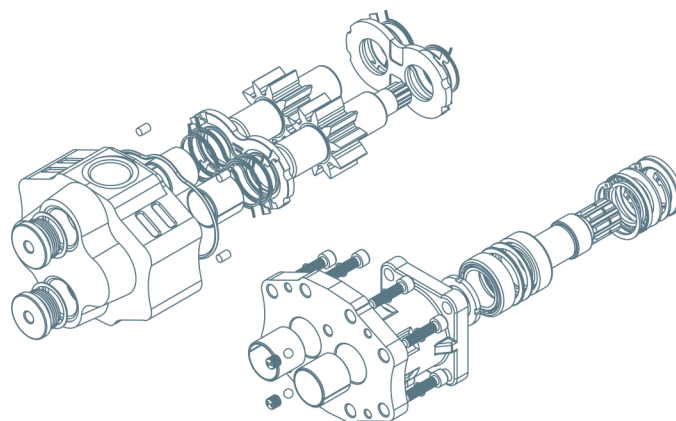
CODES	PUMPENGRUPPE	VERDRÄNGUNGSGRUPPE (cm <sup>3</sup> /rev)	ROTATIONS-WEISE	MAX CONT. PRES.	MAX DRUCK	A mm	B mm	EINLASS	AUSLASS	KG
16300170366/399/369	30	17 LT	CW/CCW/CW-CCW	230 BAR	250 BAR	163,50	114,00	R1/2"	R1/2"	10,50
16300270366/399/369	30	27 LT	CW/CCW/CW-CCW	230 BAR	250 BAR	163,50	114,00	R3/4"	R3/4"	10,50
16300340366/399/369	30	34 LT	CW/CCW/CW-CCW	230 BAR	250 BAR	174,50	119,50	R3/4"	R3/4"	11,04
16300430366/399/369	30	43 LT	CW/CCW/CW-CCW	220 BAR	240 BAR	182,50	123,00	R1"	R1"	12,00
16300510366/399/369	30	51 LT	CW/CCW/CW-CCW	220 BAR	240 BAR	187,50	124,50	R1"	R1"	12,50
16300610366/399/369	30	61 LT	CW/CCW/CW-CCW	200 BAR	220 BAR	188,50	127,00	R1"	R1"	13,00
16300820366/399/369	30	82 LT	CW/CCW/CW-CCW	190 BAR	210 BAR	203,50	133,50	R1"	R1"	14,00
16350900366/399/369	35	90 LT	CW/CCW/CW-CCW	220 BAR	240 BAR	215,00	150,00	R1"1/4	R1"1/4	18,00
16351100366/399/369	35	110 LT	CW/CCW/CW-CCW	220 BAR	240 BAR	234,00	153,50	R1"1/4	R1"1/4	19,00
16400630366/399/369	40	63 LT	CW/CCW/CW-CCW	220 BAR	250 BAR	201,00	135,00	R1"	R1"	18,00
16400730366/399/369	40	73 LT	CW/CCW/CW-CCW	210 BAR	240 BAR	204,00	137,00	R1"	R1"	19,00
16400870366/399/369	40	87 LT	CW/CCW/CW-CCW	210 BAR	240 BAR	210,00	141,00	R1"1/4	R1"1/4	19,00
16401090366/399/369	40	109 LT	CW/CCW/CW-CCW	190 BAR	220 BAR	217,00	145,00	R1"1/4	R1"1/4	20,50
16401330366/399/369	40	133 LT	CW/CCW/CW-CCW	190 BAR	220 BAR	227,00	149,00	R1"1/4	R1"1/4	22,00
16401510366/399/369	40	151 LT	CW/CCW/CW-CCW	190 BAR	210 BAR	234,00	151,50	R1"1/4	R1"1/4	22,50

\*NICHT = ROTATIONSWEGE SIND

\*CW = RECHTSDREHUNG

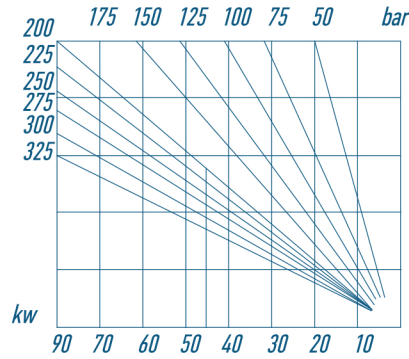
\*CCW = LINKSLAUF

\*CW-CCW DOPPELTER WEG

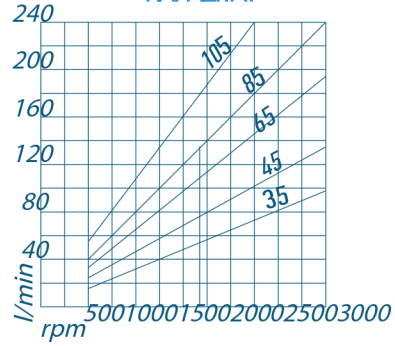




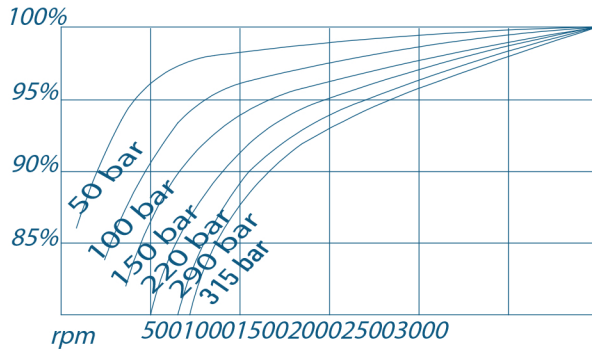
LEISTUNGS-AUFNAHME



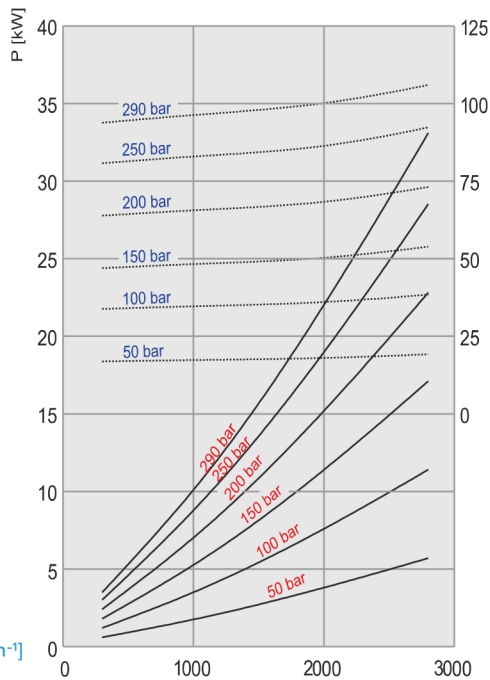
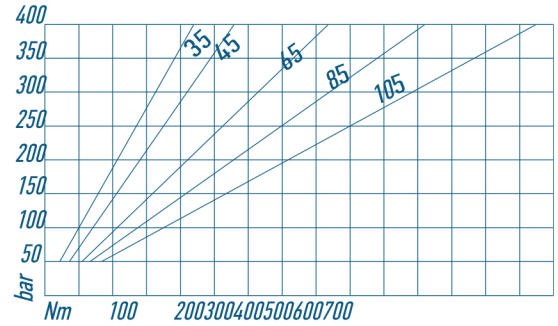
KAPAZITÄT



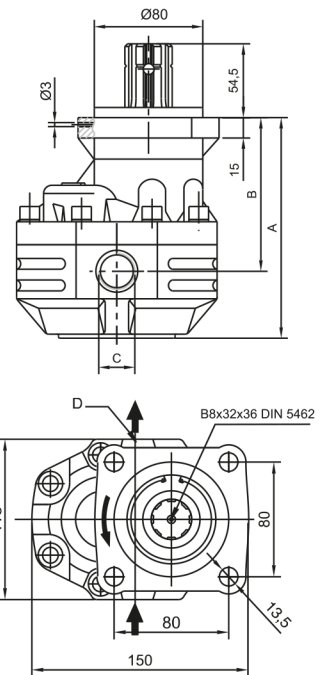
VOLUMETRISCHER WIRKUNGSGRAD



ANTRIEBSDREHMOMENT



Drehzahl/Minute  $n$  [min<sup>-1</sup>]



Hinweis: Bei der erneuten Montage der Pumpe muss der O-Ring auf der Abdeckfläche in den Schlitz gesteckt und gefettet werden, damit er während der Montage nicht abfällt.